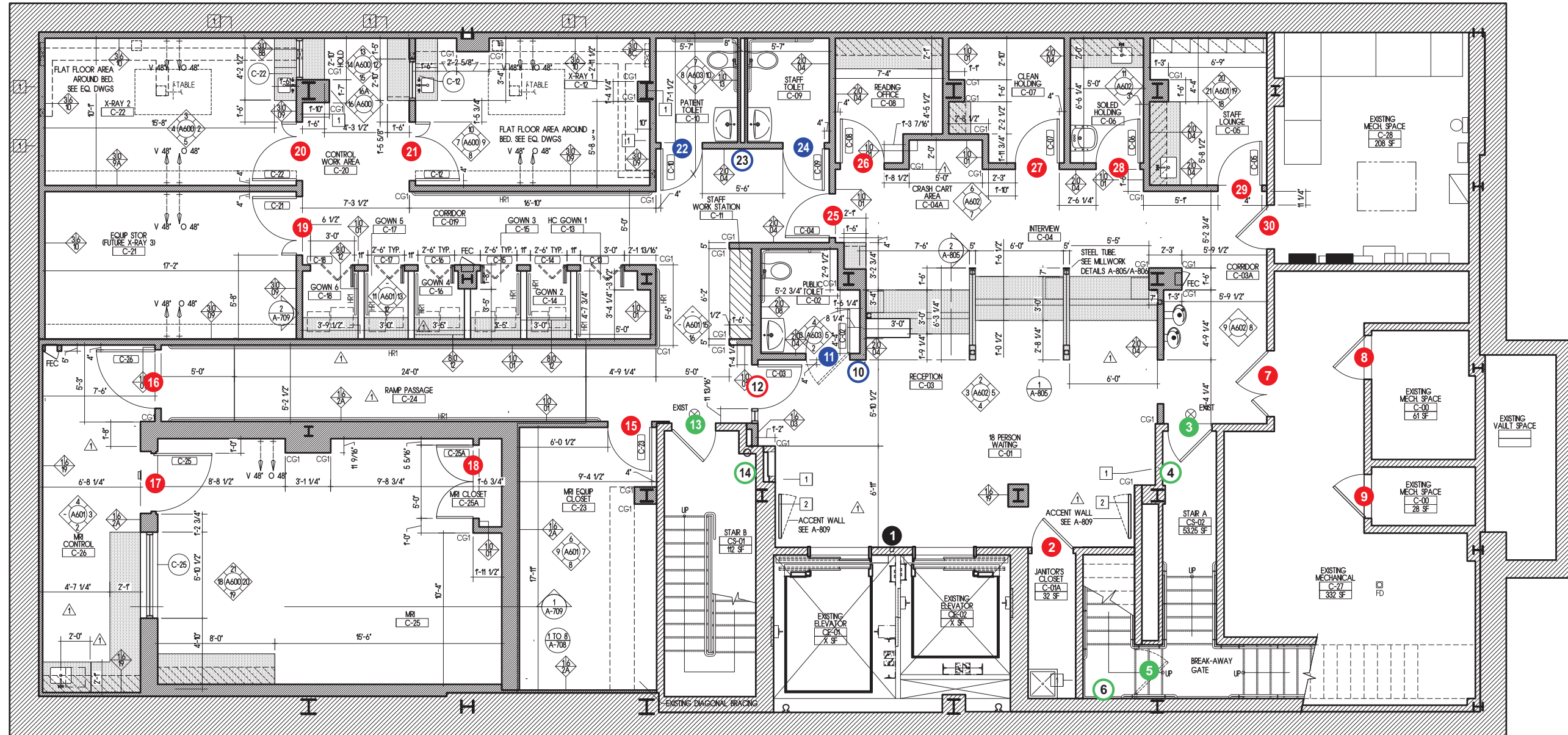


CELLAR FLOOR



DESCRIPTION	QTY
● ROOM ID SIGN	17
○ SUITE ID SIGN	1
● RESTROOM SIGN	3
○ FLAG SIGN	2
● STAIR ID SIGN	3
○ STAIR/FLOOR ID SIGN	3
● EGRESS MAP	1

LOCATION PLAN

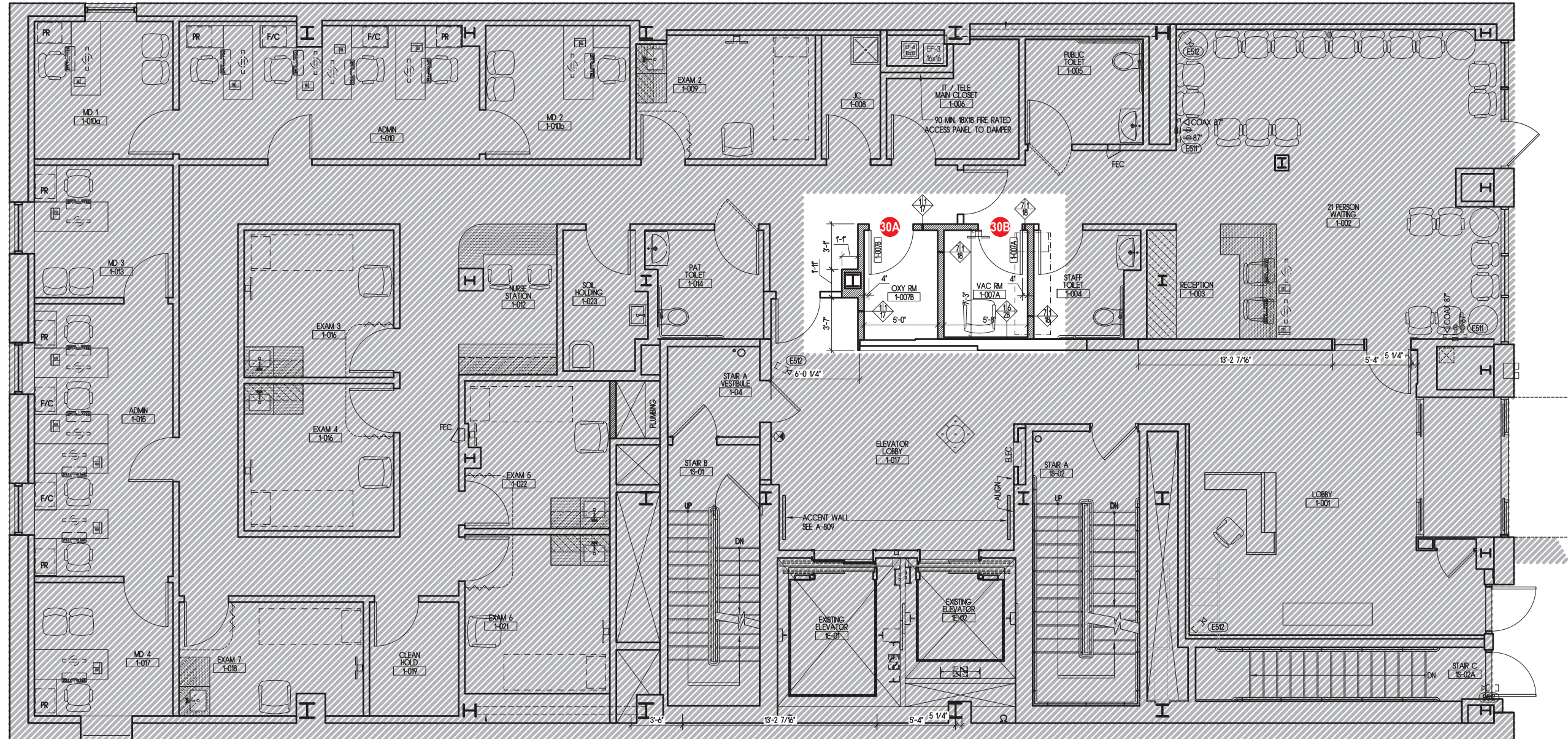
Hospital for Special Surgery
429 East 75th Street

DRAWING PRODUCED BY: **Eric Ma** DATE: **10/26/10**



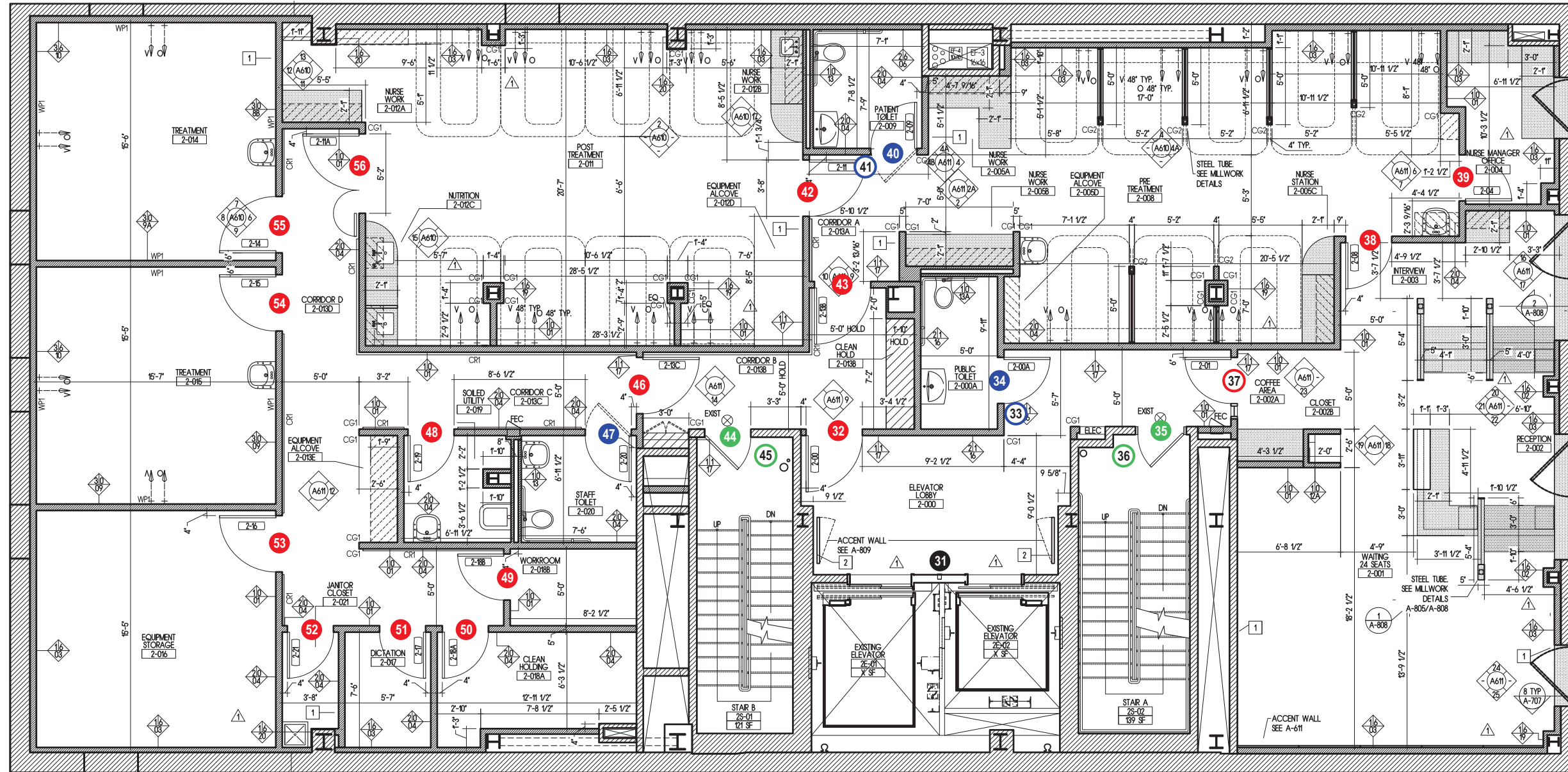
PO Box 10782
Bedford, NH 03110
603-669-1300 tel
603-622-1457 fax
www.gdssigns.com

FIRST FLOOR



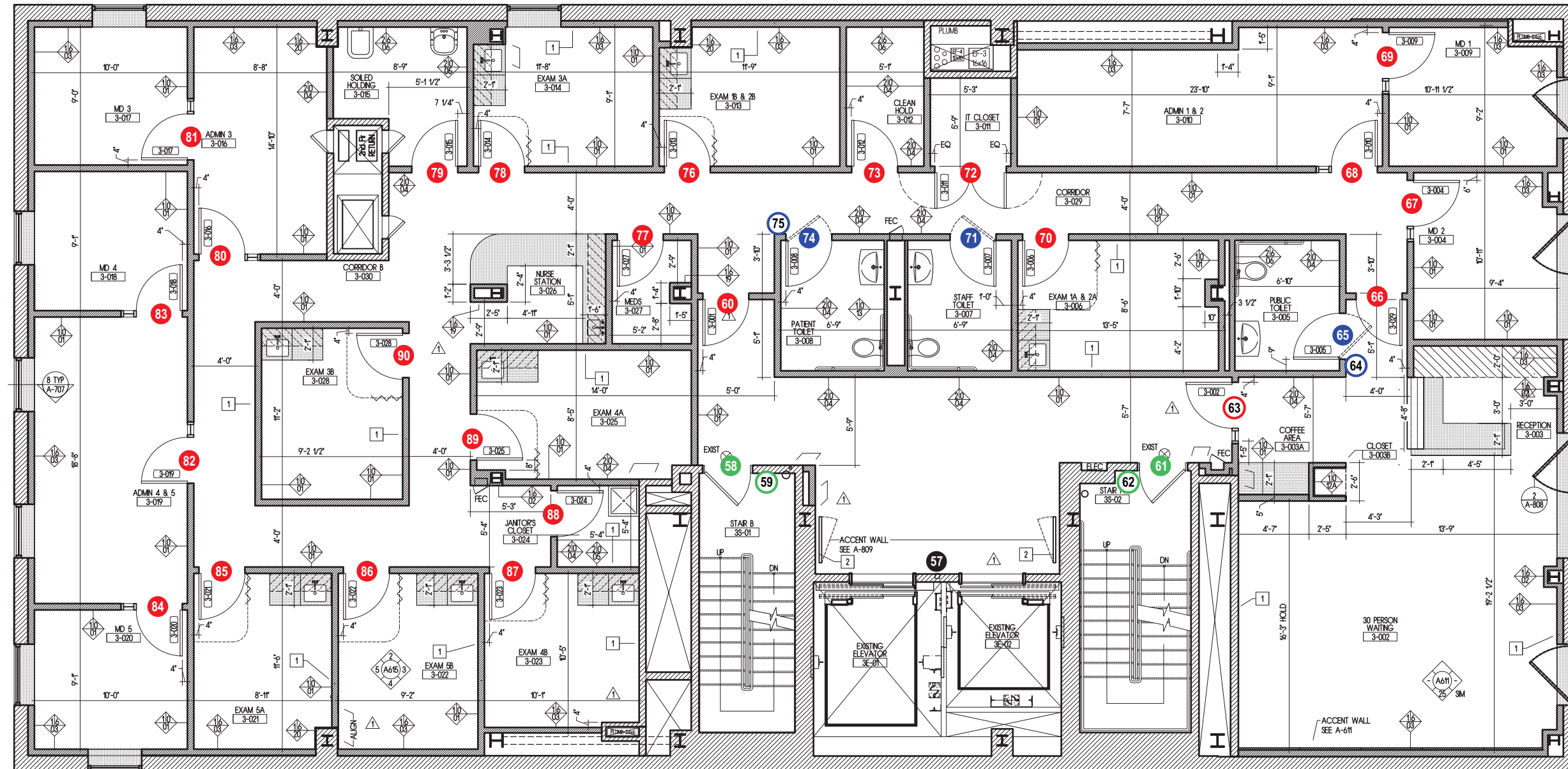
DESCRIPTION		QTY	LOCATION PLAN Hospital for Special Surgery 429 East 75th Street
●	ROOM ID SIGN	2	
○	SUITE ID SIGN		
●	RESTROOM SIGN		
○	FLAG SIGN		
●	STAIR ID SIGN		
○	STAIR/FLOOR ID SIGN		
●	EGRESS MAP		
DRAWING PRODUCED BY: Eric Ma			DATE: 10/26/10
			PO Box 10782 Bedford, NH 03110
			603-669-1300 tel 603-622-1457 fax www.gdssigns.com

SECOND FLOOR



			LOCATION PLAN	
●	ROOM ID SIGN	15	Hospital for Special Surgery 429 East 75th Street	
○	SUITE ID SIGN	1		
●	RESTROOM SIGN	3	DRAWING PRODUCED BY: Eric Ma DATE: 10/26/10	
○	FLAG SIGN	2		
●	STAIR ID SIGN	2	PO Box 10782 Bedford, NH 03110	
○	STAIR/FLOOR ID SIGN	2		
●	EGRESS MAP	1	603-669-1300 tel 603-622-1457 fax www.gdssigns.com	

THIRD FLOOR



DESCRIPTION	QTY	LOCATION PLAN	
● ROOM ID SIGN	23	Hospital for Special Surgery 429 East 75th Street	
○ SUITE ID SIGN	1		
● RESTROOM SIGN	3	DRAWING PRODUCED BY: Eric Ma DATE: 10/26/10	
○ FLAG SIGN	2		
● STAIR ID SIGN	2	PO Box 10782 Bedford, NH 03110	
○ STAIR/FLOOR ID SIGN	2		
● EGRESS MAP	1	603-669-1300 tel 603-622-1457 fax www.gdssigns.com	



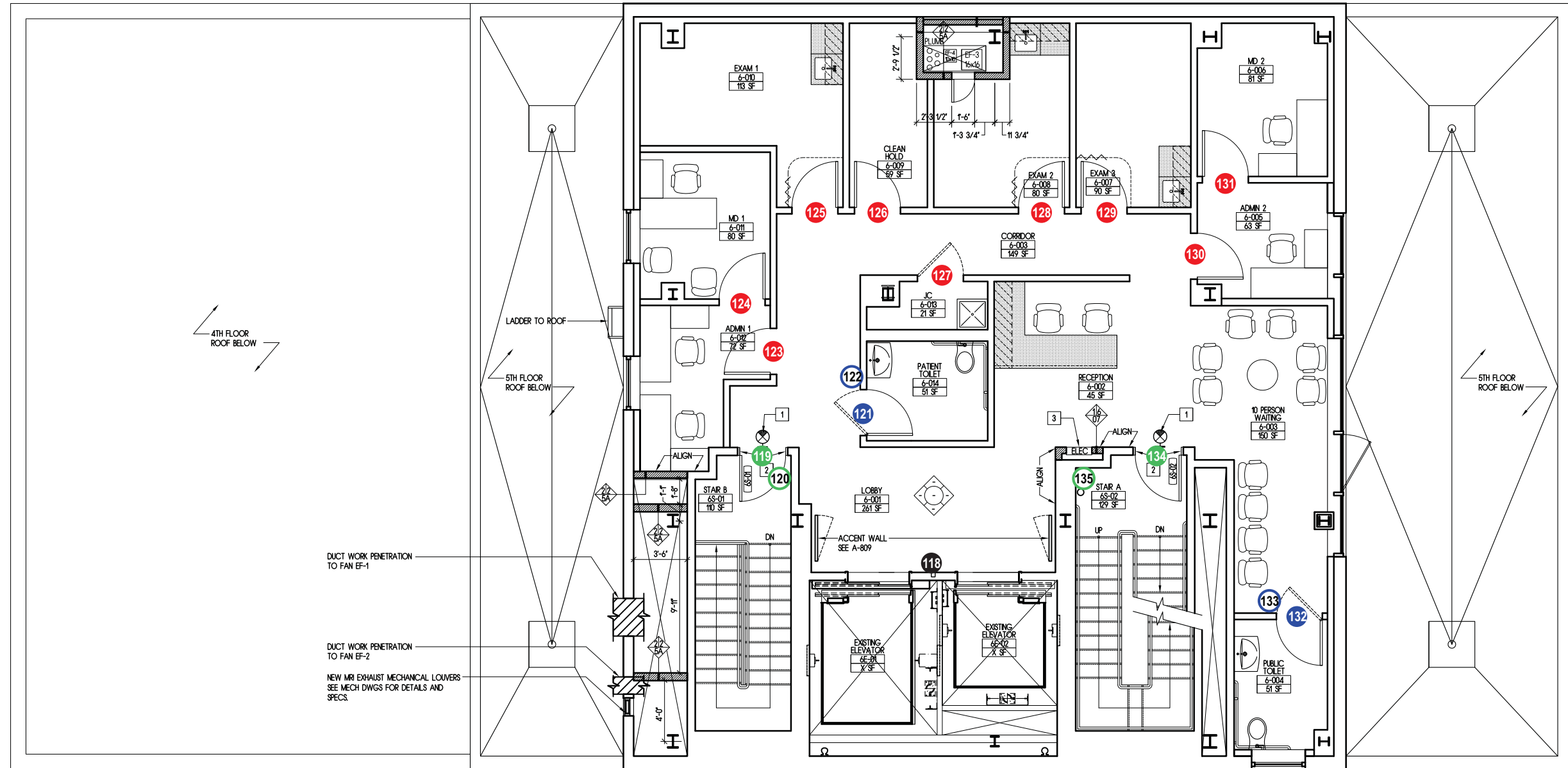
FOURTH FLOOR



DESCRIPTION		QTY	LOCATION PLAN	
●	ROOM ID SIGN	18	Hospital for Special Surgery 429 East 75th Street	
○	SUITE ID SIGN	1		
●	RESTROOM SIGN	2	DRAWING PRODUCED BY: Eric Ma DATE: 10/26/10	
○	FLAG SIGN	2		
●	STAIR ID SIGN	2	PO Box 10782 Bedford, NH 03110	
○	STAIR/FLOOR ID SIGN	2		
●	EGRESS MAP	1	603-669-1300 tel 603-622-1457 fax	

GDS INC.
Signage Consultants
www.gdssigns.com

SIXTH FLOOR



DUCT WORK PENETRATION TO FAN EF-1

DUCT WORK PENETRATION TO FAN EF-2

NEW MRI EXHAUST MECHANICAL LOUVERS SEE MECH DWGS FOR DETAILS AND SPECS.

DESCRIPTION	QTY
● ROOM ID SIGN	9
○ SUITE ID SIGN	
● RESTROOM SIGN	2
○ FLAG SIGN	2
● STAIR ID SIGN	2
○ STAIR/FLOOR ID SIGN	2
● EGRESS MAP	1

LOCATION PLAN

Hospital for Special Surgery
429 East 75th Street

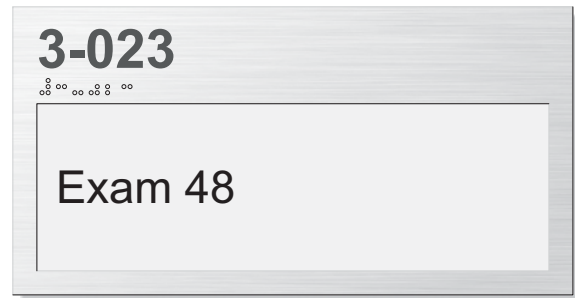
DRAWING PRODUCED BY: **Eric Ma** DATE: **10/26/10**

GDS INC.
Signage Consultants

PO Box 10782
Bedford, NH 03110

603-669-1300 tel
603-622-1457 fax

www.gdssigns.com



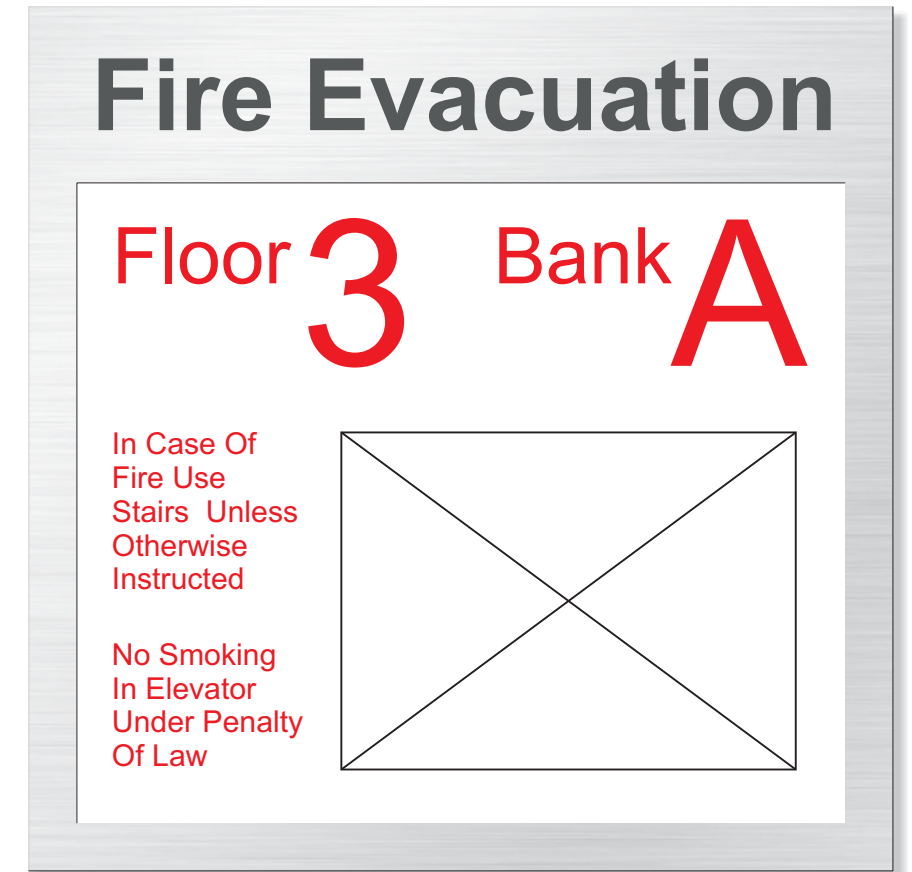
● ROOM ID SIGN
4.5"H x 8.75"W
Satin aluminum laminate
PMS 425 raised graphics
Grade 2 Braille (ADA)
2.625"H x 8"W Insert



● RESTROOM SIGN
9"H x 7"W
Satin aluminum laminate
PMS 425 raised graphics
Grade 2 Braille (ADA)
6.5"H x 6.25"W Insert



○ FLAG SIGN
7.5"H x 8"W
Satin aluminum laminate
5"H x 7.25"W Insert



● EGRESS MAP
13.5"H x 13.5"W
Satin aluminum laminate
PMS 425 raised graphics
10"H x 12"W Insert



○ SUITE ID SIGN
7"H x 9"W
Satin aluminum laminate
PMS 425 raised graphics
Grade 2 Braille (ADA)
4.625"H x 8.25"W Insert



● STAIR ID SIGN
9"H x 7"W
Satin aluminum laminate
PMS 425 raised graphics
Grade 2 Braille (ADA)
6.5"H x 6.25"W Insert



○ STAIR/FLOOR ID SIGN
9"H x 7"W
Satin aluminum laminate
6.5"H x 6.25"W Insert

	DESCRIPTION	QTY	SIGN TYPES	
●	ROOM ID SIGN	84	Hospital for Special Surgery 429 East 75th Street	
○	SUITE ID SIGN	4		
●	RESTROOM SIGN	13	DRAWING PRODUCED BY: Eric Ma DATE: 10/26/10	
○	FLAG SIGN	10	PO Box 10782 Bedford, NH 03110	
●	STAIR ID SIGN	11		
○	STAIR/FLOOR ID SIGN	11	603-669-1300 tel 603-622-1457 fax	
●	EGRESS MAP	5	www.gdssigns.com	

